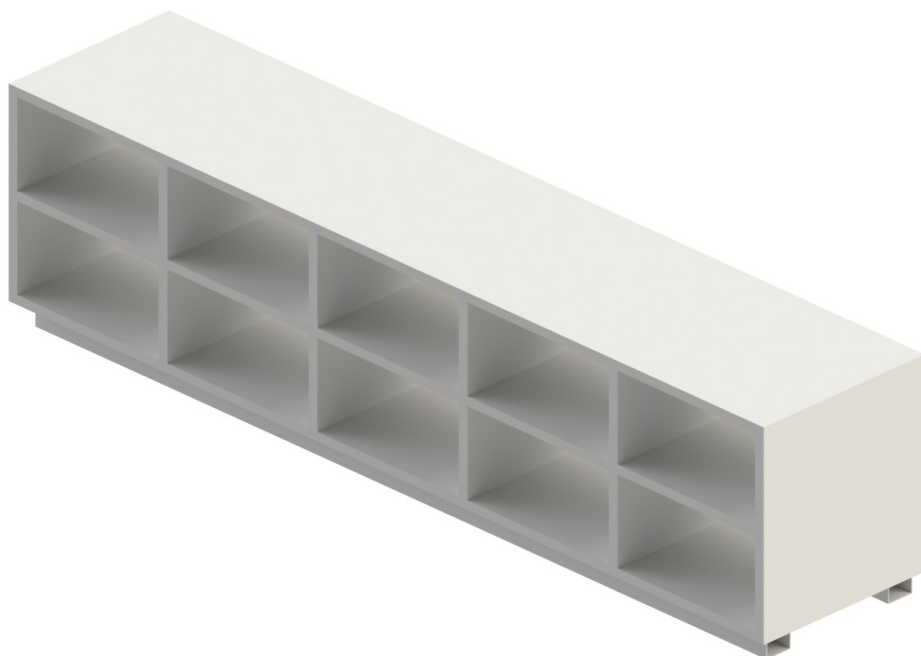


Personnel Airlocks

STEP-OVER BENCH - PASS-THROUGH

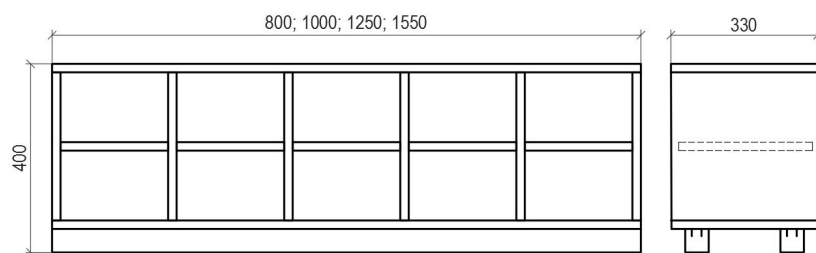


Step-over benches, along with other elements for clean areas, create a comprehensive range of products to meet the most demanding requirements of a designer of material pass-throughs or personnel pass-throughs.

- It is made of laminated chipboard with ABS edged in white finish. The removable shelves for shoes are made of metal sheet, with thermosetting powder coat hue RAL 9016.
- The cabinet comes with a plinth 50 mm.
- It is used to store shoes. A step-over bench creates an imaginary line of spatial cleanliness in the pass-through.
- The bench can be combined with high cabinets for storing clothes, shoes or a sink cabinet
- We offer two variants of benches - single-sided and double-sided.

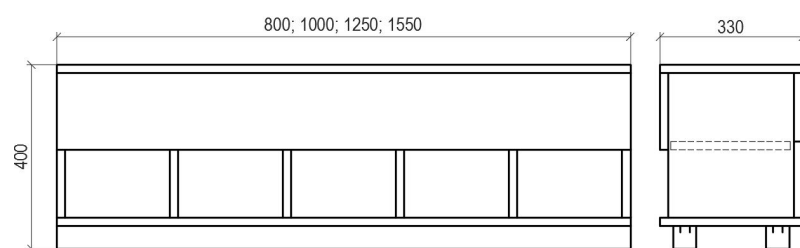
DIMENSIONAL RANGE

	step-over bench	deep bench
width (mm)	800, 1000, 1250, 1550	800, 1000, 1250, 1550
depth (mm)	330	400, 450, 500



PL1

PL1 - Single-sided step-over bench



PL2

PL2 - Double-sided step-over bench

TECHNICAL DATA

Type

Step-over bench, deep bench

Type marking

value	width	depth
Step-over bench	800, 1000, 1250, 1550 mm	330 mm
Deep bench	800, 1000, 1250, 1550 mm	400, 450, 500 mm

Material design

Material	intended
Body is made of laminated boards th. 18mm desk of HPL th. 12mm	Standard plus*
Bench is made of stainless steel, th. panel 22 / 30 mm	Premium 304

Bench type

height	description	intended for
400 mm	jednostranná	lavice překročná 20
400 mm	oboustranná	Lavice překročná 20
400 mm	jednostranná hluboká	lavice hluboká 22

Depth of bench

depth	value	intended
330 mm	Step-over bench	PL1, PL2
400 mm	Deep bench	HL1
450 mm	Deep bench	HL1
500 mm	Deep bench	HL1

Width, internal division		
width	internal division	intended
800 mm	6x úložný oddíl na obuv / 2x úložný oddíl na obuv	PL1, PL2. HL1
1000 mm	6x úložný oddíl na obuv / 4x úložný oddíl na obuv	PL1, PL2. HL1
1250 mm	8x úložný oddíl na obuv / 4x úložný oddíl na obuv	PL1, PL2. HL1
1550 mm	10x úložný oddíl na obuv / 4x úložný oddíl na obuv	PL1, PL2. HL1
X mm	počet oddílů dle šířky lavice a materiálového provedení *	PL1, PL2. HL1
* for an atypical dimension, the determination of the internal division (number of compartments) is based on the nearest offered dimension so that the internal width of the compartment is not less than 240 mm		

Plinth 50 mm		
height	value	intended
50 mm	Basic profile covered with floor covering. For new floor covering	PL1, PL2, HL1
50 mm	Metal profile with surface finish RAL 9016. For the existing floor covering	PL1, PL2, HL1
50 mm	Basic stainless steel profile, for existing floor.	PL1, PL2, HL1
mm	atypical	PL1, PL2, HL1
* basic color design (white RAL9016 / gray RAL7035)		
** basic height of the plinth is 50mm. If the height of the plinth is atypical, for example 80 mm, then the total height of the bench will be 430 mm. Please note that the total height of the bench should not be higher than 450 mm in terms of ergonomics.		

Surface finish	
value	intended
corpus white / top plate HPL chalk	Standard plus
corpus white /top plate HPL gray	Standard plus
corpus gray / top plate HPL gray	Standard plus
Stainless steel AISI304, finished SB	Premium 304
Atypical - optional colour finish	
* possibility of another color for the body and the top plate (choice of above-standard colors for an additional charge according to cat. no.212.02)	

Atypical design
Type design
Atypical design
Type design 0 - Unique specification out of offered versions Atypical design Q - atypical design that cannot be uniquely specified by a code

MORE INFORMATION, PHOTOS

