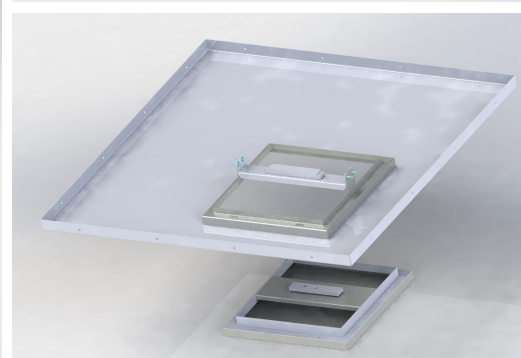
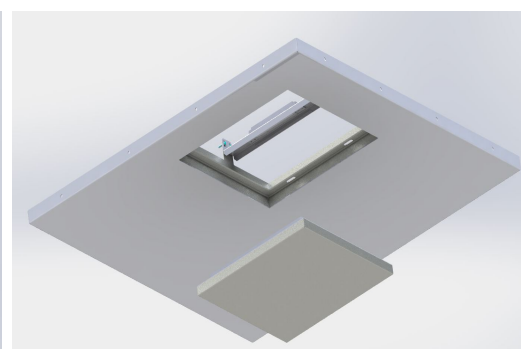
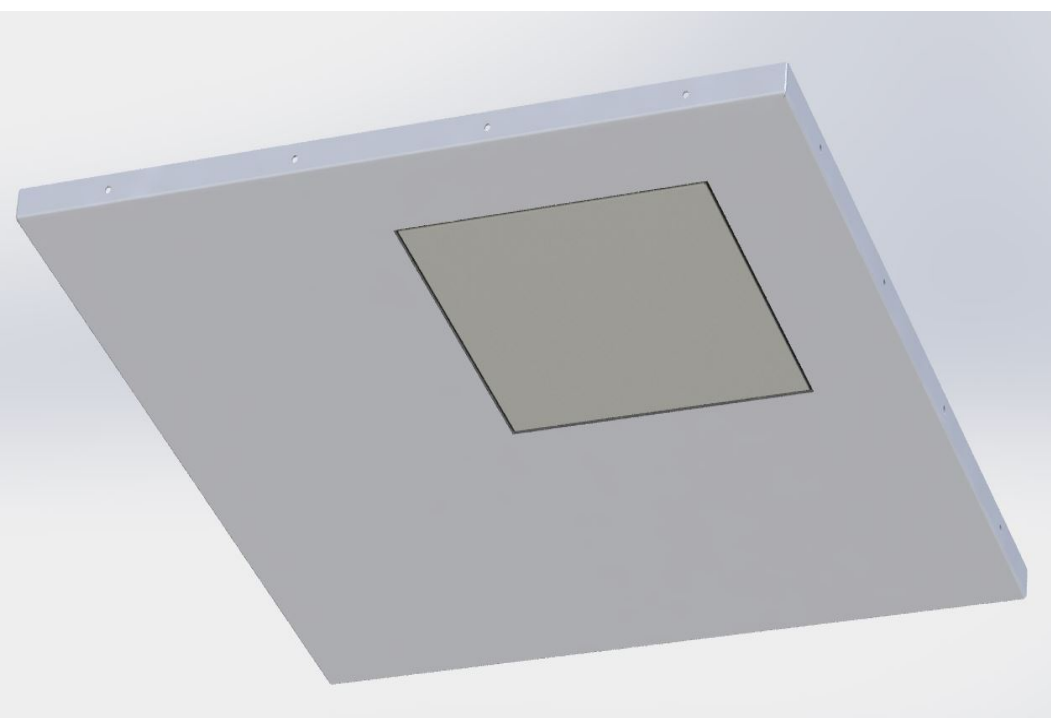


Ceiling

SMOKE EXHAUST CEILING PANEL



A smoke exhaust panel for ceiling. The panel is designed as a gravitational system for the exhaust of heat and smoke in the case of an emergency - fire. Suitable for operating rooms, preparation rooms, clean laboratories and clean warehouses. The panel is integrated in a walkable suspended ceiling panels of 1170x1170 mm, 625x625 mm. The panel is used as a safety device.

It is intended for the ventilation of rooms in connection with an air supply door.

TECHNICAL DATA

Type designation

Air inlet door

Panel dimensions

for ceiling panel 105.07A

for ceiling panel 105.01F

Atypical panel

It is possible to select the walkable tile suspended ceiling or suspended ceiling.

Open dimensions

476 x 476

atypical dimension

Colour and material	
colour	Material
Komaxit v odstínu 9016	galvanized sheet
Komaxit v odstínu RAL	galvanized sheet
Standard colour: RAL 9016	

Non-standard design
Standard design
Non-standard design

MORE INFORMATION, PHOTOS

