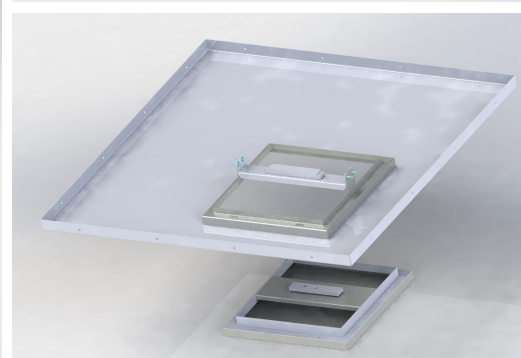
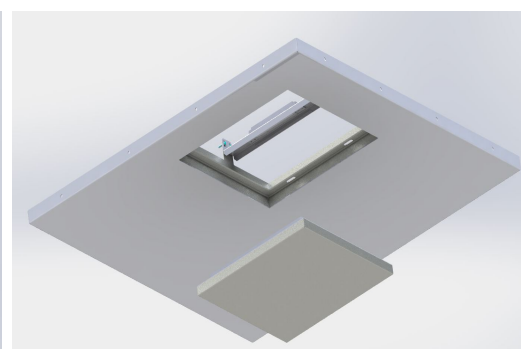
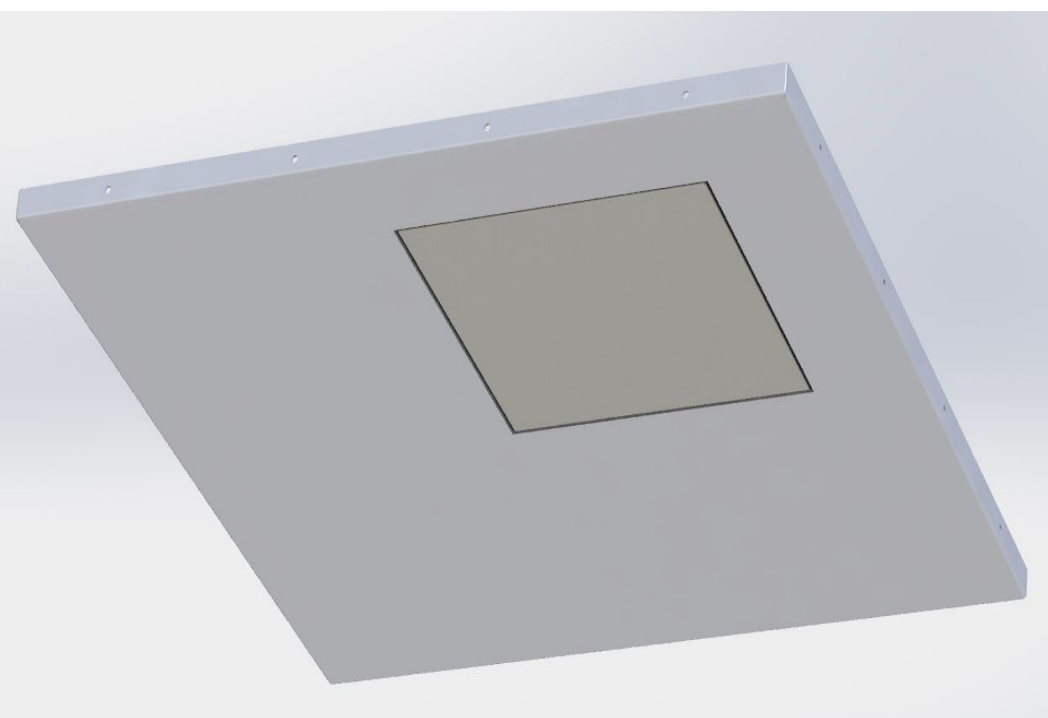


## Ceiling

## SMOKE EXHAUST CEILING PANEL



A smoke exhaust panel for ceiling. The panel is designed as a gravitational system for the exhaust of heat and smoke in the case of an emergency - fire. Suitable for operating rooms, preparation rooms, clean laboratories and clean warehouses. The panel is integrated in a walkable suspended ceiling panels of 1170x1170 mm, 625x625 mm. The panel is used as a safety device.

**It is intended for the ventilation of rooms in connection with an air supply door.**

## TECHNICAL DATA

## Type designation

Air inlet door

## Panel dimensions

for ceiling panel 105.07A

for ceiling panel 105.01F

Atypical panel

It is possible to select the walkable tile suspended ceiling or suspended ceiling.

## Open dimensions

476 x 476

atypical dimension

Colour and material	
colour	Material
Komaxit v odstínu 9016	galvanized sheet
Komaxit v odstínu RAL	galvanized sheet
Standard colour: RAL 9016	

Non-standard design
Standard design
Non-standard design

## MORE INFORMATION, PHOTOS

