

cat. no. 108.92

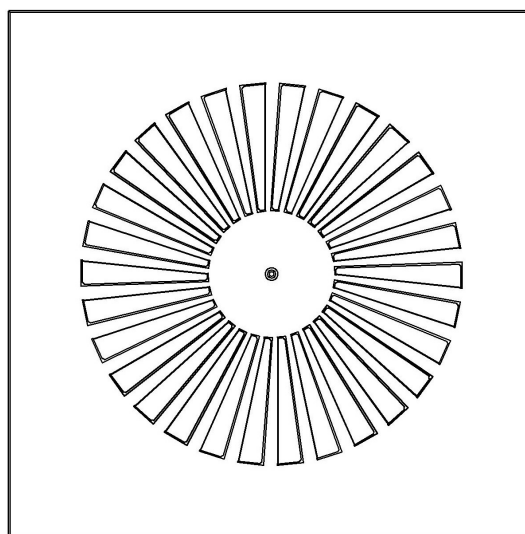
HVAC attachments and grilles

## CEILING SWIRL DIFFUSORS A

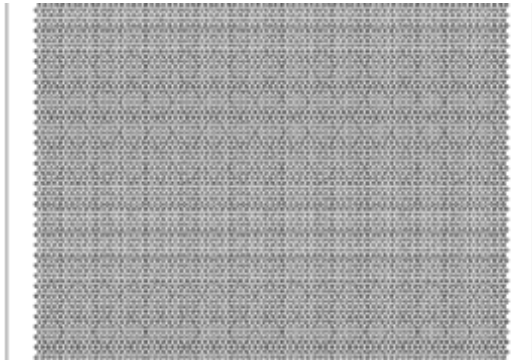


## PRODUCT DESCRIPTION

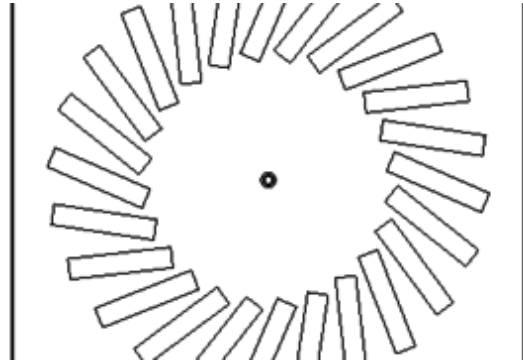
The outlet elements are used to distribute the air to the room. Most often, swirl diffusers are used, which allow a rapid reduction of the flow rate of the supplied air and its even mixing with the air in the room. Perforated sheet metal is used for free and even air supply to the room.



Swirl diffuser BLOCK for filter 457 mm with 30 fixed air control blades



Perforated sheet



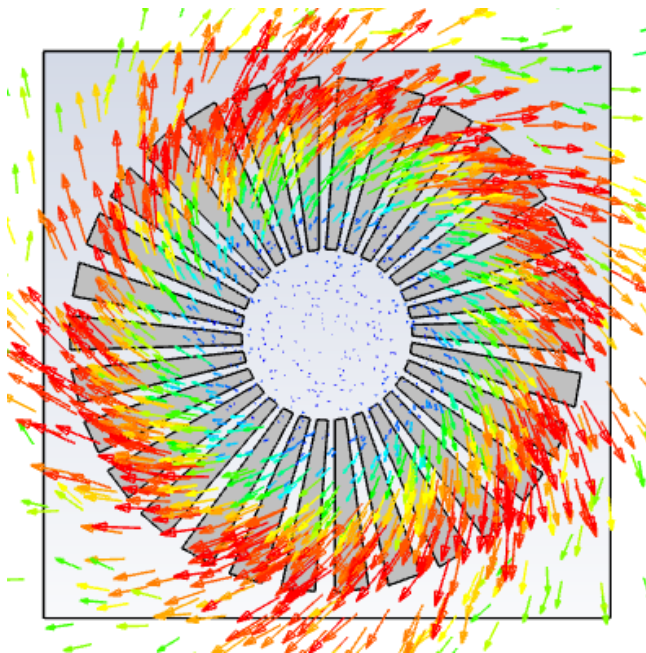
TROX diffuser

## CEILING MOUNTING

- The standard attachment of the output element is by means of a central screw, which is anchored to the cross member located in the housing of the attachment.
- The size of the attachment depends on the size of the filter and its bearing surface.

## BENEFITS

- color resistance
- corrosion protection



*Air flow through the diffuser*

## SUITABLE FOR AREAS

- Pharmacy, biotechnology, medical devices
- Microelectronics, optics, automotive, electrical engineering
- Healthcare
- Engineering, food, chemical industry, etc. industry

## TECHNICAL DATA

Type
Ceiling swirl diffusers
Type of HVAC attachment
extension to a light metal ceiling with a grid of 625 mm
extension to the panel ceiling
The size of the filter in the attachment
attachment without filter
filter 305×305 mm
filter 475×475 mm
filter 570×570 mm
Exhaust element
swirling diffuser with fixed slats
swirling diffuser with manually adjustable slats
ceeling diffuser
perforated metal sheet
Swirling vent-grille BLOCK
Swirling vent-grille BLOCK
Surface of the diffusers
Komaxit powder coating in RAL 9016
Stainless steel AISI304
Komaxit powder coating in RAL shade
Atypical design
Type design
Atypical design
Type design 0 - Unique specification out of offered versions Atypical design Q - atypical design that cannot be uniquely specified by a code

## MORE INFORMATION, PHOTOS

