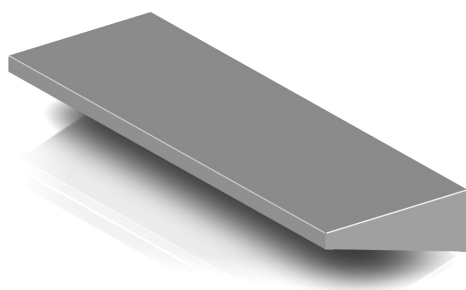


cat. no. 215.08

Personnel Airlocks

STAINLESS STEEL SUSPENDED SHELF



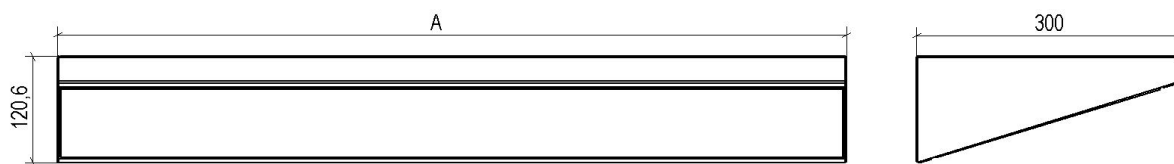
-
- Floating shelves suitable for clean rooms.
 - Shelf load capacity:
 - 30 kg/shelf
 - Shelf installation
 - mounted onto a partition wall using self-tapping screws

Dimensional range:

Shelf width A (mm) 600; 700; 800; 900

Shelf bed depth (mm) 300

Shelf bed depth (mm) 120



TECHNICAL DATA

Type designation

Stainless steel suspended shelf

Width

width	value
600 mm	Width of stainless steel shelf
700 mm	Width of stainless steel shelf
800 mm	Width of stainless steel shelf
900 mm	Width of stainless steel shelf

Material design

Stainless steel AISI 304, surface SB

Stainless steel AISI 316, surface SB

Atypical execution

Standard design

Atypical execution

Typical execution

0 - clear choice from the options

Atypical execution

Q - Atypical design, which can not be clearly identified by means of code

MORE INFORMATION, PHOTOS

