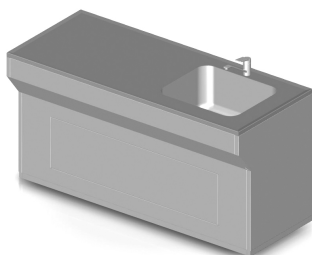


Washing

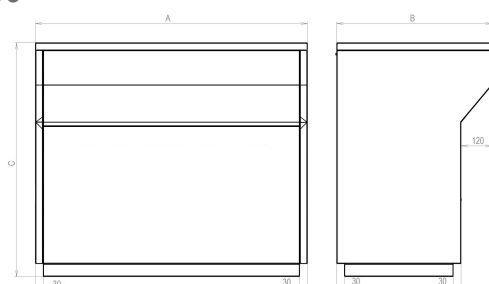
STAINLESS STEEL WASHING TABLES



- Stainless steel washing tables, along with the other elements of the Forlab stainless steel system, are a complete kit for setting up any furniture assembly that meets the customer's requirements. The table consists of worktop, frame and additional covering.
- The worktop consists of a P1.5 stainless steel sheet facing with a welded-in sink(s) and a laminate filler. From the perspective of design, it may be simple, with indentation (raised edge) or with edge raised by 40 mm.
- The frame is composed of H-shaped side legs and reinforcement bolted to the side legs. The legs feature standard adjustable feet allowing to adjust the table height (approx. 30 mm). When assembling two tables, one central leg, instead of two legs, is used for joining the two tables. The sheet covering may be one-sided, two-sided or three-sided.

Dimensional range:

Width (mm)	900; 1200; 1500; 1800
Depth (mm)	600; 750; 900
Height (mm)	900



TECHNICAL DATA

Type designation

Washing table GMP

Table frame material

Table frame material AISI 304 FIN SB

atypical

Worktop material
Worktop material- stainless steel AISI 304
Worktop material- stainless steel AISI 316
atypical

Table construction type
Worktop design - Smooth without edges
Worktop design – Smooth with indentation along the perimeter

Width "A"	
value	width
Width	900 mm
Width	1200 mm
Width	1500 mm
Width	1800 mm

Depth "B"	
depth	value
600 mm	Depth
750 mm	Depth
900 mm	Depth

Sink dimensions			
detailed description	intended for	dimension	value
Otvor pro připojení odpadu mm 70/54 (1 1/2")	Pro hloubku pracovní desky 600 mm	400×400×250	Sink
Otvor pro připojení odpadu mm 70/54 (1 1/2")	Pro hloubku pracovní desky 600 mm	400×400×300	Sink
Otvor pro připojení odpadu mm 70/54 (1 1/2")	Pro hloubku pracovní desky 600 mm	500×400×250	Sink
Otvor pro připojení odpadu mm 70/54 (1 1/2")	Pro hloubku pracovní desky 600 mm	500×400×300	Sink
Otvor pro připojení odpadu mm 70/54 (1 1/2")	pro hloubku stolu 750 a 900 mm	500×500×300 (*)	Sink
Otvor pro připojení odpadu mm 70/54 (1 1/2")	pro hloubku stolu 750 a 900 mm	600×450×300 (*)	Sink
Otvor pro připojení odpadu mm 70/54 (1 1/2")	pro hloubku stolu 750 a 900 mm	600×500×300 (*)	Sink
Otvor pro připojení odpadu mm 46/36,5 (1")	pro šířku stolu 1500 a 1800 mm a hloubku 750 a 900 mm	1280×510×215 (***)	Bath
Otvor pro připojení odpadu mm 46/36,5 (1")	pro šířku stolu 1500 a 1800 mm a hloubku 750 a 900 mm	1280×510×340 (***)	Bath
Otvor pro připojení odpadu mm 46/36,5 (1")	Pro hloubku pracovní desky 600 mm	510×310×215	Bath
Otvor pro připojení odpadu mm 46/36,5 (1")	pro hloubku stolu 750 a 900 mm	630×510×215 (*)	Bath
Otvor pro připojení odpadu mm 46/36,5 (1")	pro šířku stolu 1500 a 1800 mm a hloubku 750 a 900 mm	960×510×215 (**)	Bath
Otvor pro připojení odpadu mm 46/36,5 (1")	pro šířku stolu 1500 a 1800 mm a hloubku 750 a 900 mm	960×510×340 (**)	Bath
(*) Sinks for table depth 750 and 900 mm. (**) Vevařovací vany for table width 1500 and 1800 mm and table depth 750 and 900 mm (***) Vevařovací vany for table width 1500 and 1800 mm and table depth 750 and 900 mm			

Number and location of sinks
Two sinks
Two sinks on the right
Two sinks on the left
Sink on the left
Sink on the right
Sink in the middle

Mixer
without
mixer on the wall
Single lever mixer
Single lever pillar mixer with pull-out spout 00 - None

Water trap	
value	Material
Water trap	Stainless steel AISI304
Water trap	Stainless steel AISI316
Water trap	plastic

Variant of basic profile	
detailed description	value
Musí být vyspecifikován příslušným kódem.	Basic profile Stainless steel AISI304, 50mm
Musí být zkrešen půdorys základního profilu a vyspecifikován příslušným kódem.	Basic profile is covered with flooring, 50mm
	another solution

Atypical execution
Typical execution
Atypical execution
Typical execution 0 - clear choice from the options Atypical execution Q - Atypical design, which can not be clearly identified by means of code

MORE INFORMATION, PHOTOS

